

VILLA OTTAVI

PIANTE PROSPETTI E SEZIONI

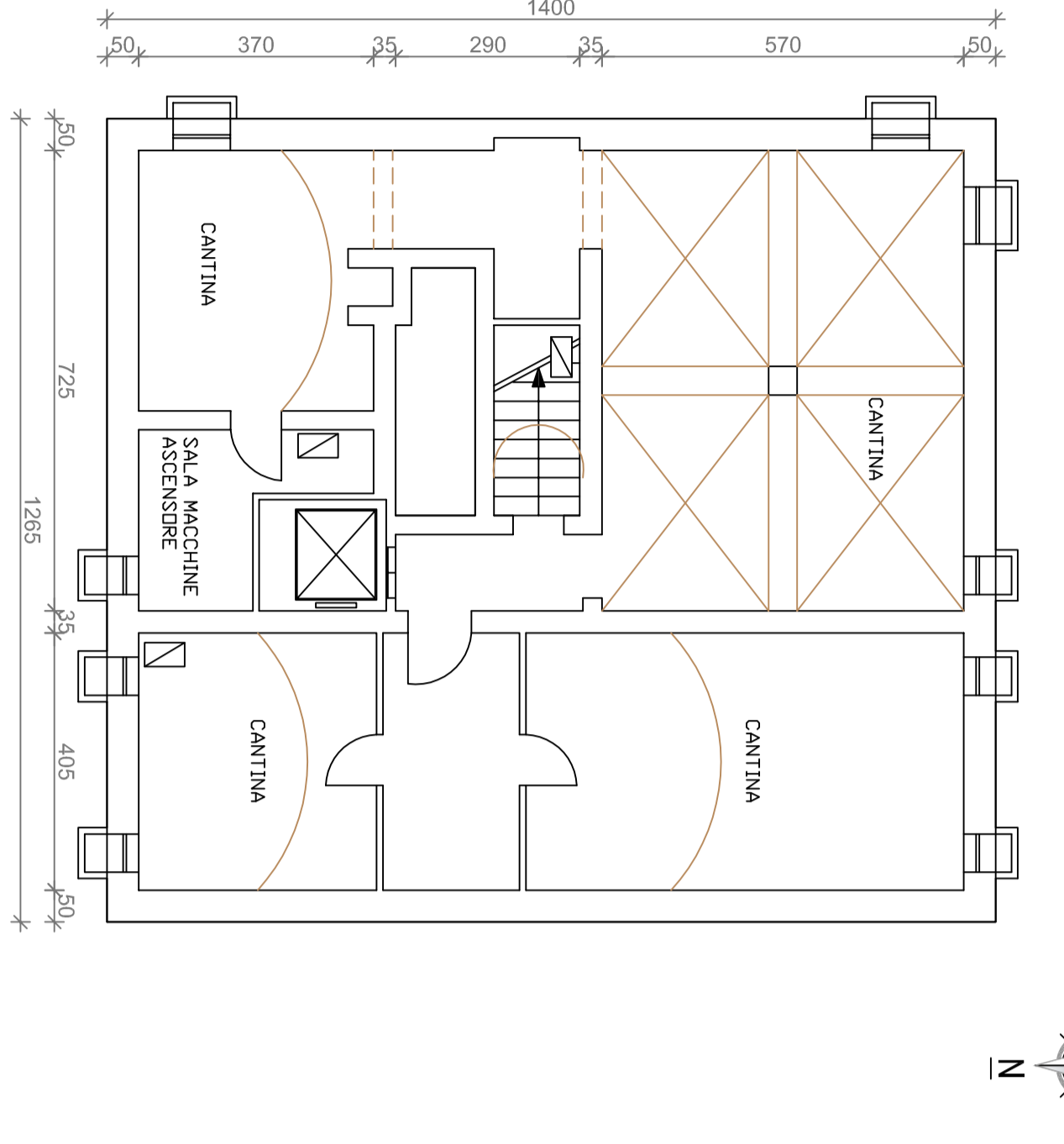
SCALA 1:100

Il Dirigente del Servizio
 Infrastrutture Mobilità
 e Patrimonio Edilizio
 Procedimento:
 Del. Ing. VALERIO BRUSSEI

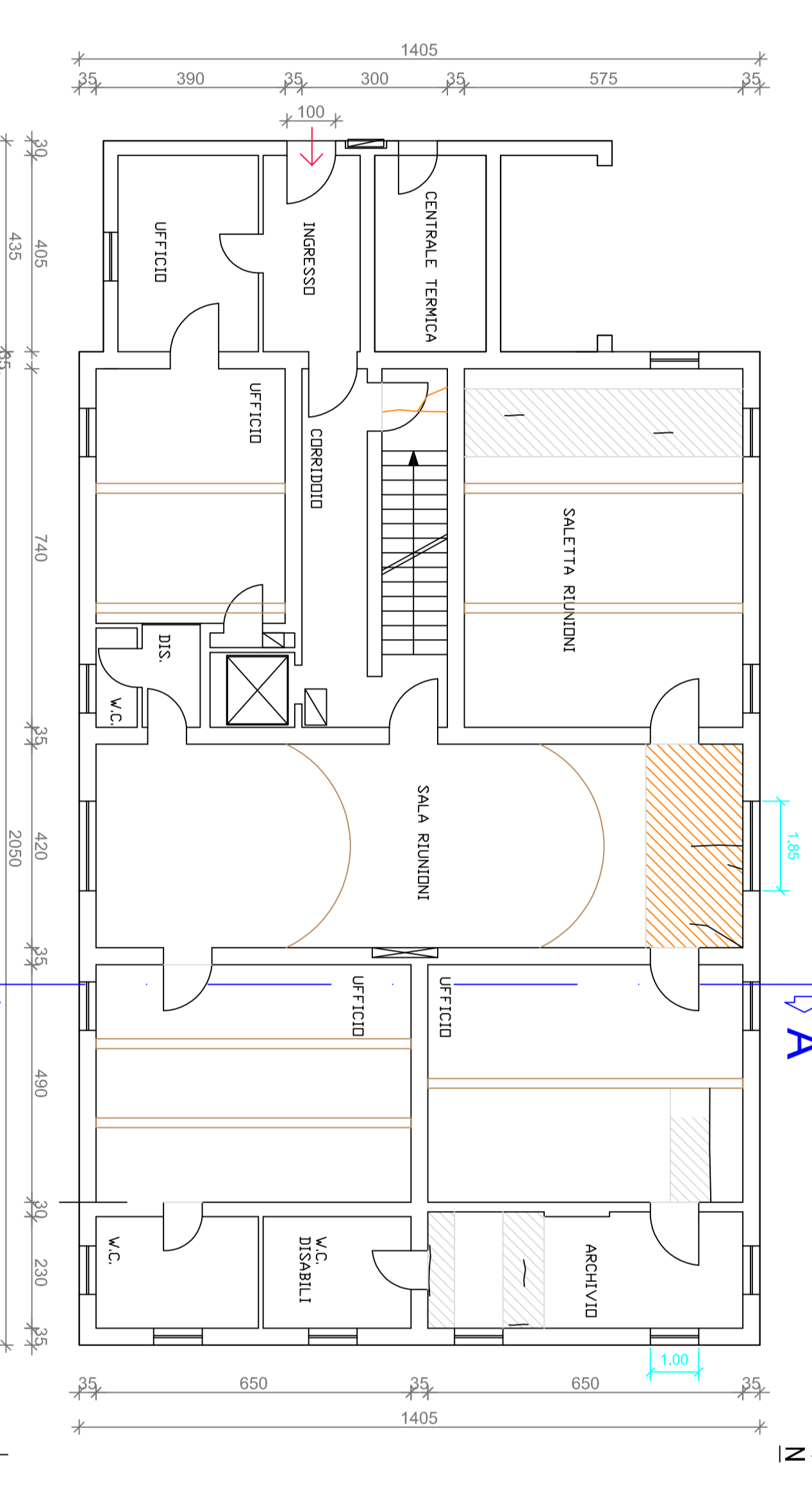
REVISIONE		Realizzato	Verificato o Votato
Data	Descrizione Modifiche	Data	Nome

Al. n°	Data Progetto	N° P.L.C.G.	Nome File

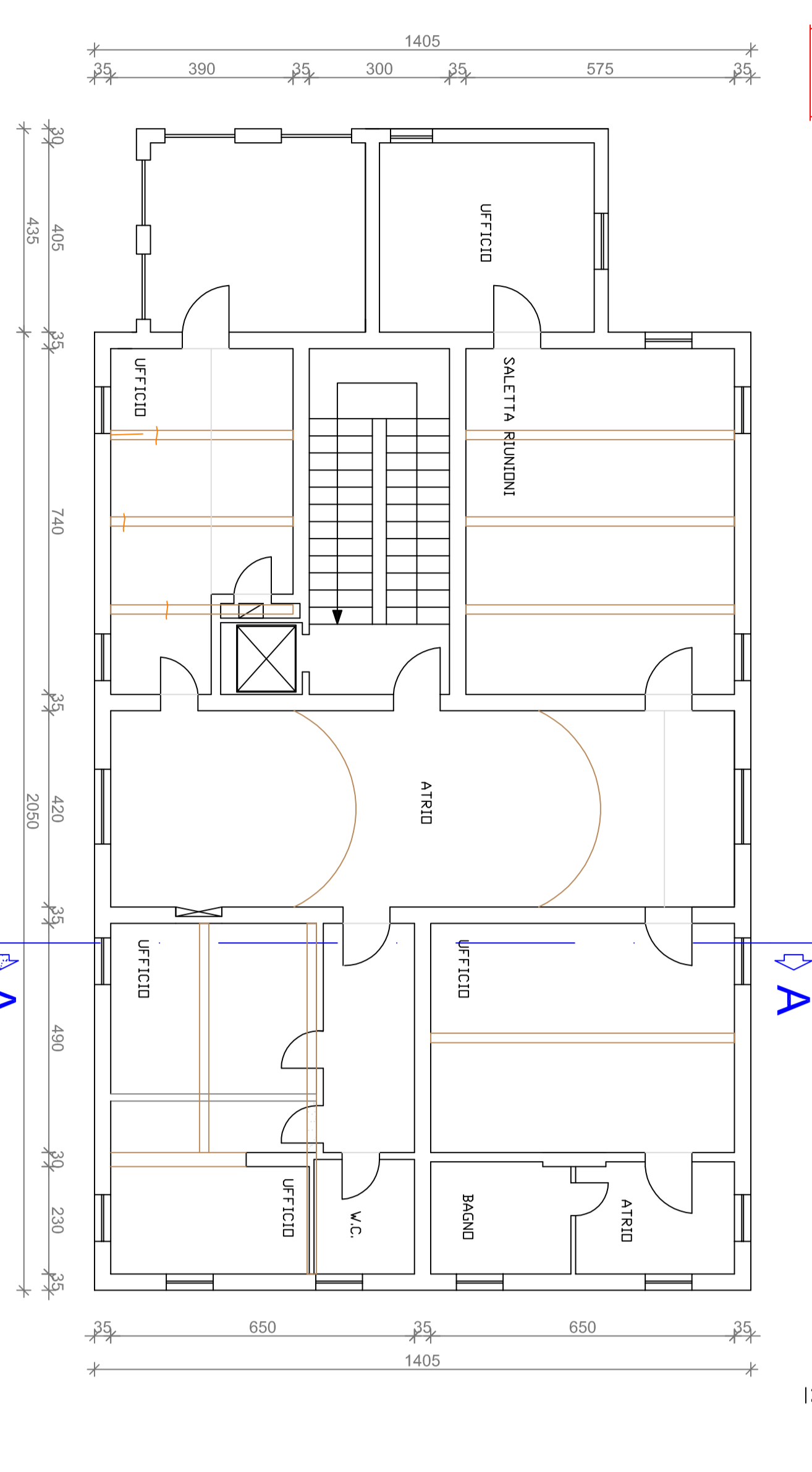
PIANTA PIANO SEMINTERRATO
Scala 1:100



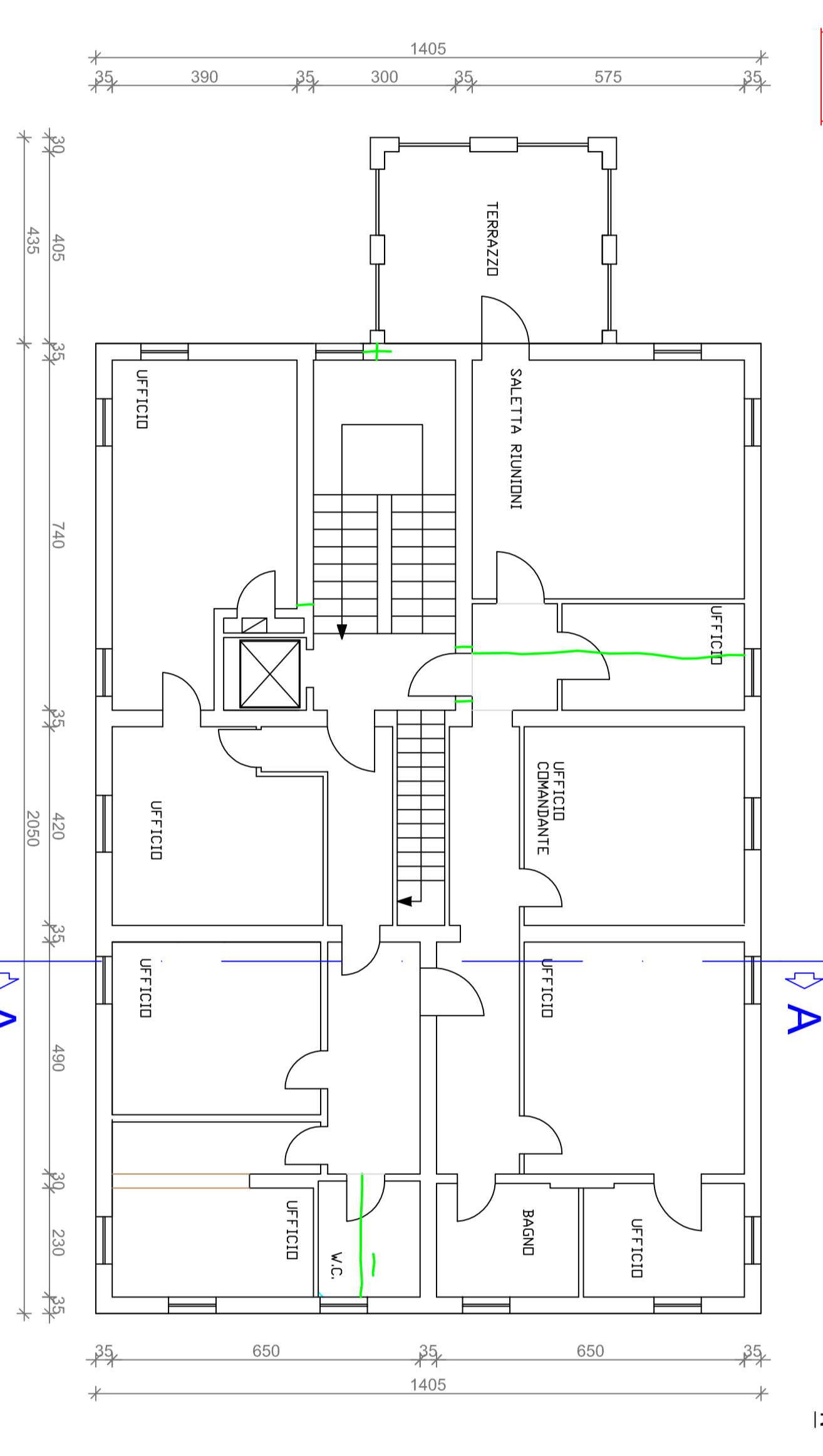
PIANTA PIANO TERRA
Scala 1:100



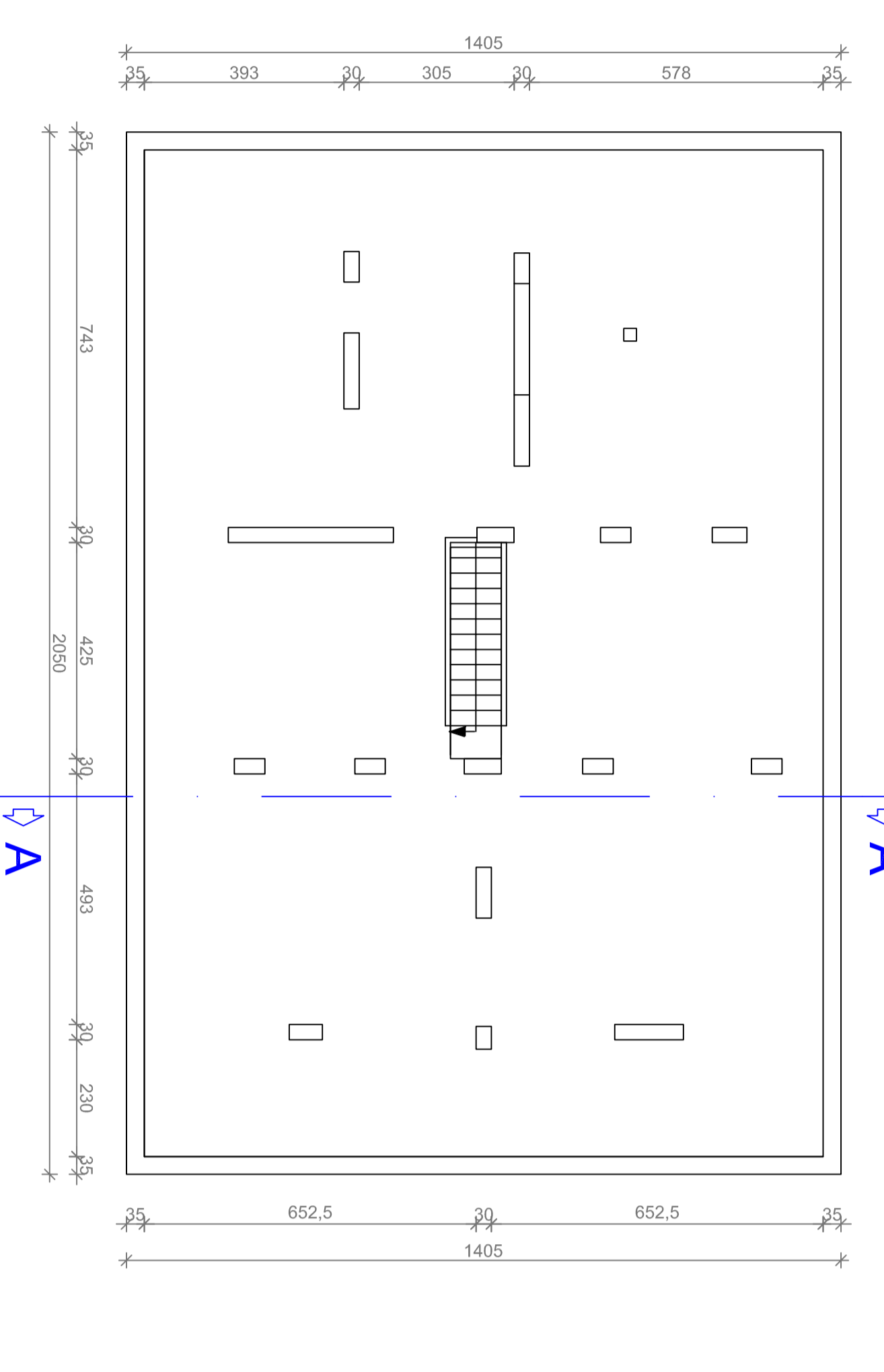
PIANTA PIANO PRIMO
Scala 1:100



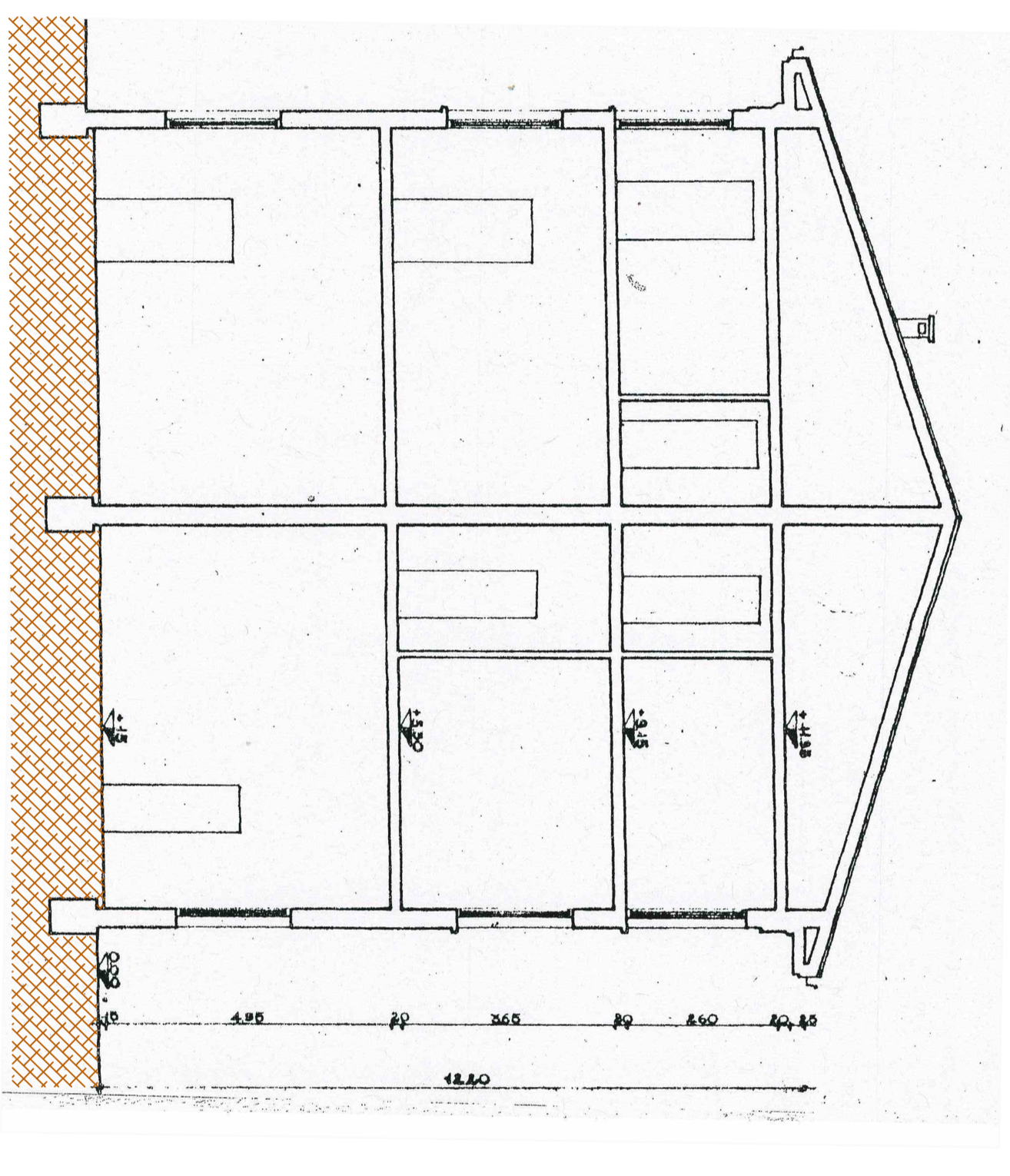
PIANTA PIANO SECONDO
Scala 1:100



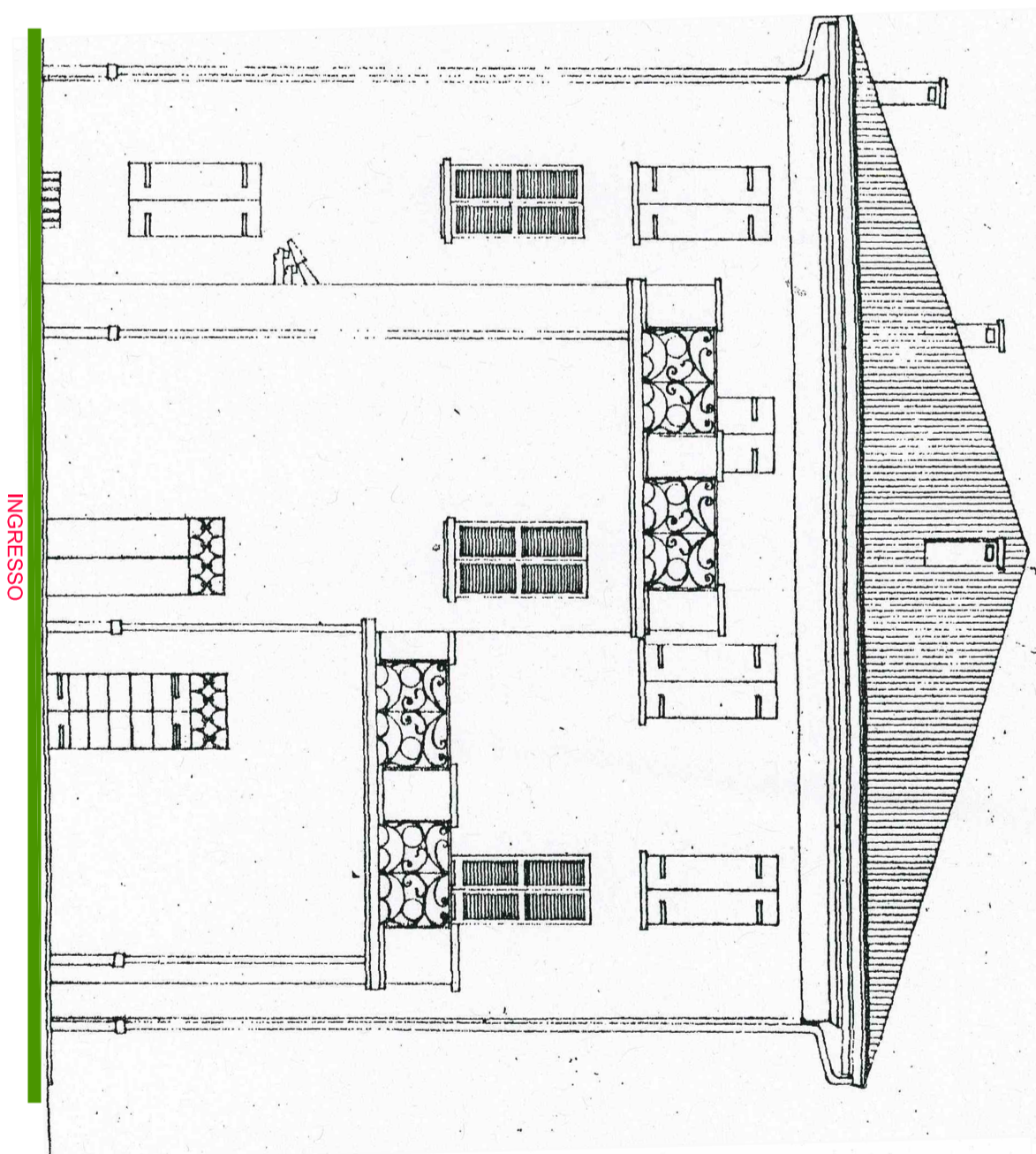
PIANTA PIANO SOTTOIETTO
Scala 1:100



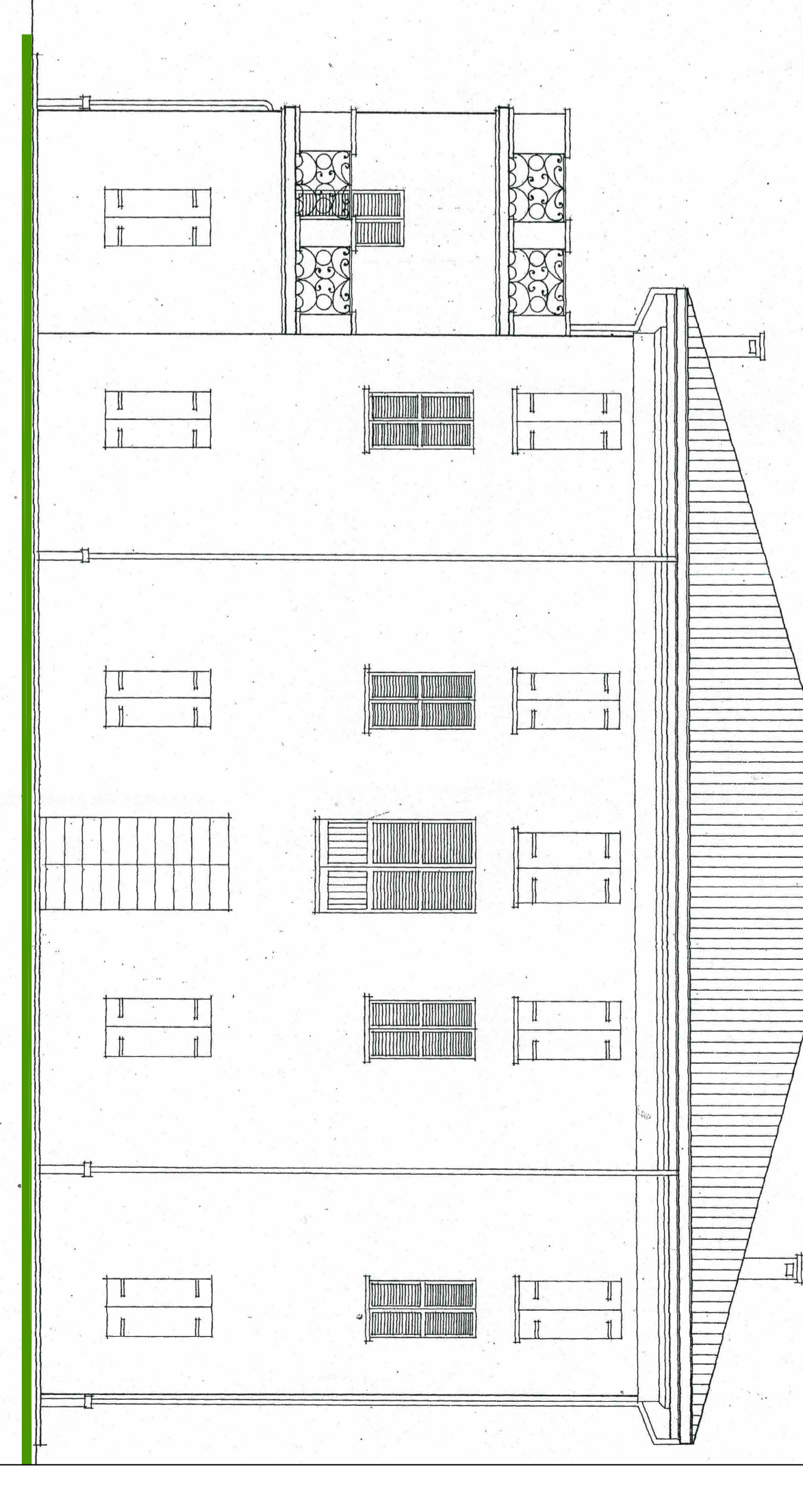
SEZIONE A-A



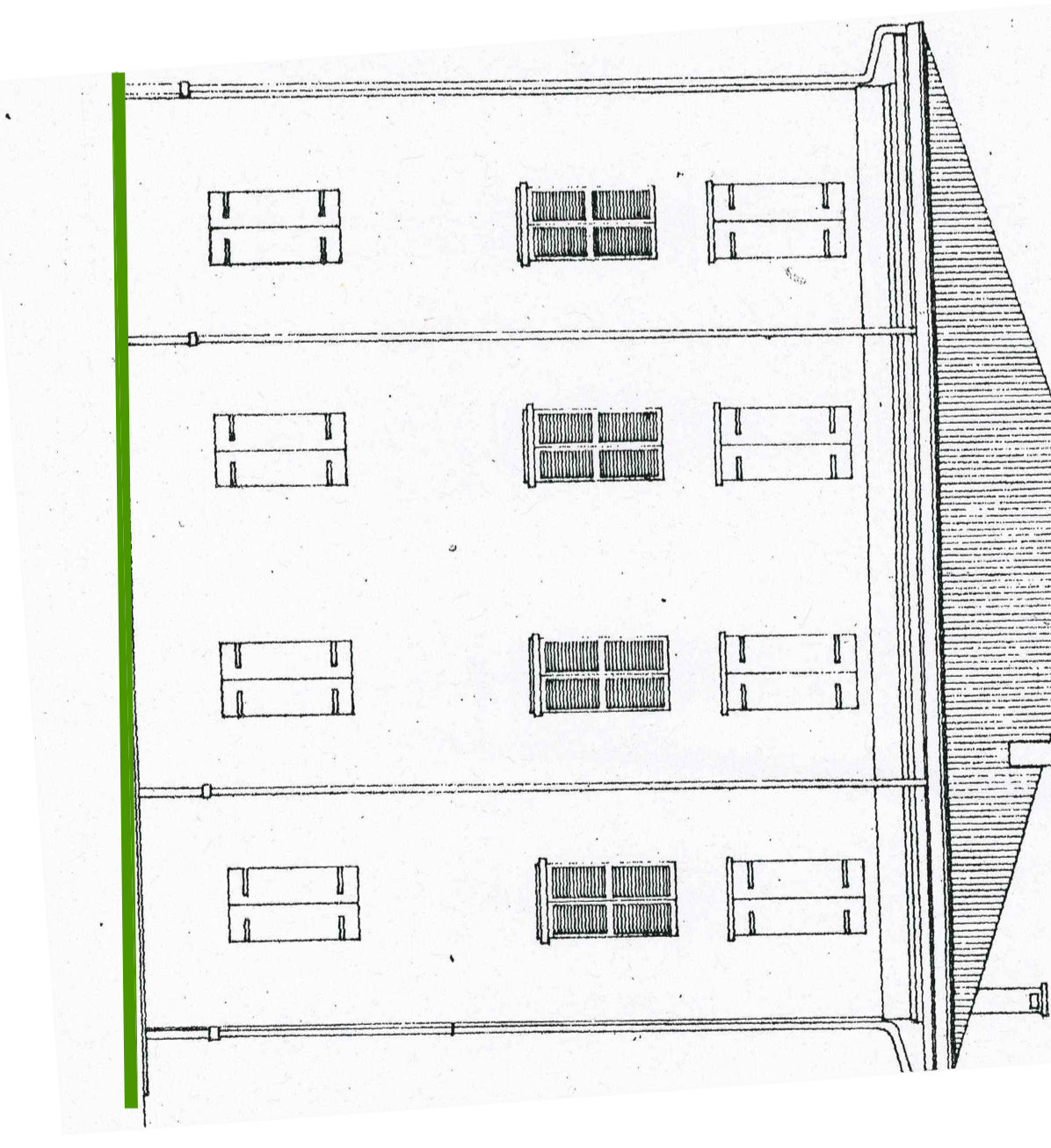
PROSPETTO EST



PROSPETTO NORD



PROSPETTO OVEST



PROSPETTO SUD

